

Pigment Decobrush markers give artists the freedom of creation. Their opaque paint can be used on paper, metal, glass, plastic, wood, textile, and a lot of other materials. The opaque, matte paint can also be used on dark surfaces with techniques still unavailable to other markers. When painting, the markers will not bleed through the backside of the paper.

Pigment Decobrush paints inside the markers are similar to acrylic paints. Moreover, they are enclosed in an easy-to-use body with a flexible, brush-shaped nylon tip. The colors can be blended until the paint goes completely dry. The drying time of the paint depends on the surface. After going fully dry, the paint becomes waterproof, yet still it can be removed from most surfaces. If you wish so, the paint can become scrub resistant by fixating it with an appropriate varnish (for more information, please read the manual inside).

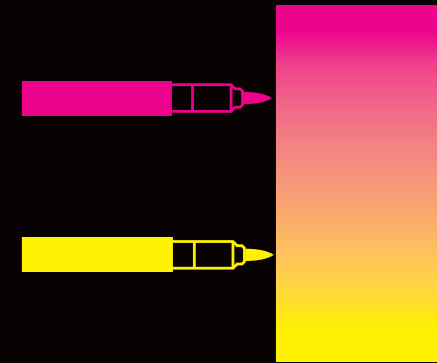
Pigment Decobrush markers contain 2.4 ml of non-toxic opaque organic pigment-based paints. They have been produced in the "liquid ink" technology thanks to which, unlike traditional technologies, they allow 100% paint consumption.

one marker multi surface art

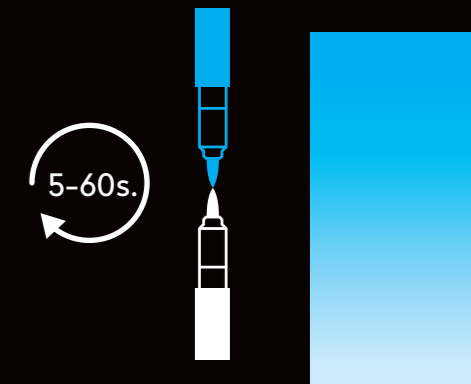
PIGMENT
decobrush

MIXING, LIGHTENING COLORS, AND TONAL TRANSITIONS.

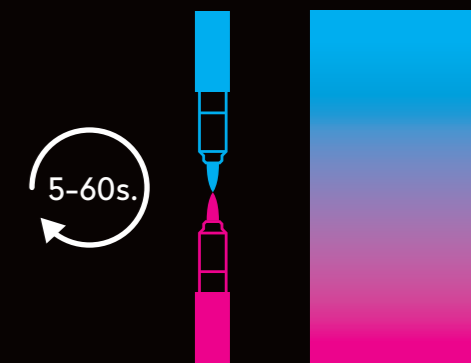
Apply the paint of one marker on a sheet of paper or on an object. Put another coat of paint of a different color and mix them together. You should get a smooth color transition. Depending on the material absorption or how much the paint has already dried out, the tonal transition may vary.



Touch the tips of the white marker with any other color and hold them both upright for 5 to 60 seconds. The bottom marker will temporarily take on the color of the top marker. This allows you to achieve a gradual tone transition from the darker color to the lighter one or inversely.



Touch the tips of two markers and hold them both upright for 5 to 60 seconds. The bottom marker will temporarily take on the color of the top marker. This allows you to create a tonal transition from one color to another (you will get two different effects by swapping the top marker with the bottom one).

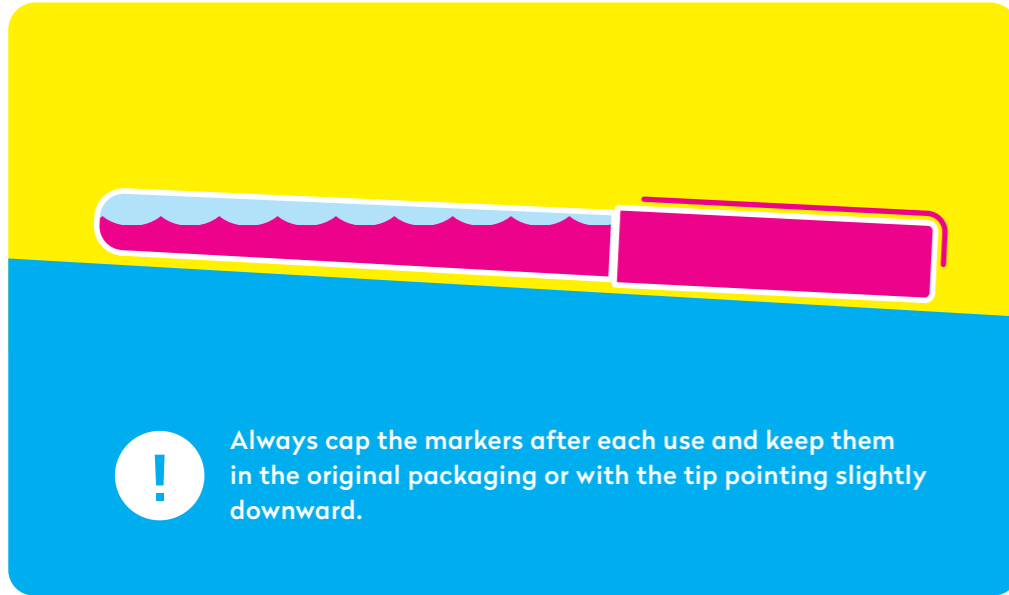


www.karinmarkers.com



HOW TO STORE PIGMENT DECOBRUSH MARKERS?

Store Pigment Decobrush markers capped in the original box. When they are out of the packaging, keep them flat with the tip pointing slightly down. It is essential when markers have been partly used. Other methods of storing may result in drying up of the marker tips.



HOW TO KEEP THE COLORS UNIFORM?

In order to maintain color consistency and use the paint efficiently, shake the marker before use. Repeat until the color inside in the cartridge becomes uniform. If the marker has been used within the last hour, the shaking is unnecessary.

HOW TO REMOVE THE PAINT?

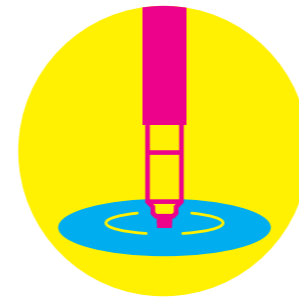
If you want to remove the paint, do so right after it has been applied on the surface. It might be difficult or even impossible after the surface has fully absorbed the paint. It is easier to remove the paint by using cleaning products containing alcohol.

HOW TO FIXATE THE PAINT OF THE MARKERS?

Pigment Decobrush markers are highly UV light-resistant. Therefore, the colors don't fade in the sunlight for a long time. The paint, after going dry, is waterproof and permanent. However, if you wish the paint to be fully scrub-resistant, it is best to use an appropriate varnish available on the market, depending on the surface the marker was applied onto. In order to fixate the paint on the textile, turn the fabric inside out and iron it. Don't exceed the water temperature over 40 degrees Celsius (104 degrees Fahrenheit) when washing.

HOW TO REMOVE THE OTHER PAINT COLORS FROM THE MARKER TIP.

During painting the marker tip may absorb other paint colors. In order to return to the original color of the marker, follow the steps below. Repeat the process if necessary.



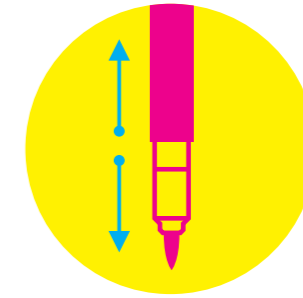
- 1 Dip the marker tip in clean water.



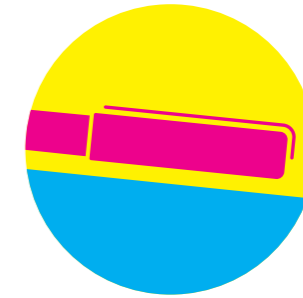
- 2 Paint a little with the marker on a clean sheet of paper until the paint returns to its original color.

WHAT TO DO WHEN A MARKER TIP DRIES OUT?

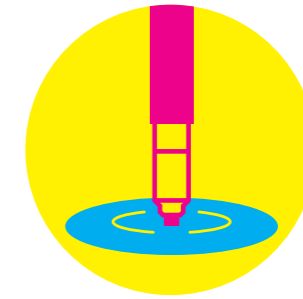
If a marker has been stored incorrectly, it might happen that the tip gets too dry to paint. Follow the steps below to fix it.



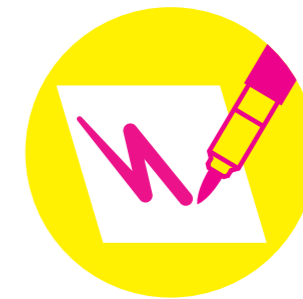
- 1 Shake the marker until the color of the paint inside the cartridge gets consistent.



- 2 Place the capped marker in the original box or put it flat with the tip pointing slightly downward for about an hour.



- 3 Dip the marker tip in clean water.



- 4 Paint a little with the marker on a clean sheet of paper until the paint returns to its original color.

If necessary, repeat the above steps. If a marker tip happens to dry out completely, the steps described here may be insufficient to fix the issue.